

LAPLAND FANTASY CHRISTMAS



PURESCANDINAVIA

Come with us to the top of the world – to Lapland, north of the Arctic Circle in Finland where we promise you days of unbelievable beauty in the Land of the Northern Lights. Picture snow covered landscapes with myriads of flickering candles placed in the snow; Santa Claus, reindeer, huskies and cosy log fires; decorate the picture with downhill and cross-country skiing, fishing in the ice and snowmobiles skimming across the snow; colour the night sky with the spectacular Aurora Borealis and finally, add to this perfect Insta picture, the warmth of a Lappish welcome.

ITINERARY

18th DECEMBER 2025: HELSINKI

Arrive Helsinki and transfer to your hotel. The festive season's a special time to visit Helsinki – streets are illuminated with myriads of lights, store fronts are dressed with colourful Christmas displays and the air is filled with a special magic.

19th DECEMBER 2025: HELSINKI / OVERNIGHT TRAIN TO ROVANIEMI

Helsinki's a beautiful city – compact and easy to move around. Join a guided sightseeing tour this morning taking in the most interesting parts of Helsinki – the historical centre, the magnificent library, the imposing City Hall, The Parliament buildings and the unique Temppeliaukio Church (Rock Church).

Depending on the Hockey League schedule, you may be able to attend an ice hockey game this evening.

Evening departure by overnight train to Rovaniemi. Don't forget to visit the on board restaurant for a drink with the locals and to try Finnish meatballs with mash and lingonberries.

20th DECEMBER 2025: ROVANIEMI - PYHÄTUNTURI

Morning arrival in Rovaniemi.



Before heading off to Pyhätunturi, we'll call in at the well known Santa Village and if you have young children, a visit to Santa Park will give them their first sprinkling of Christmas magic.

Next stop Pyhätunturi, one and a half hours away and your home for the next six nights. After your busy time at Santa Village, sit back and enjoy the views along the way.

Dinner is included this evening.

21st DECEMBER 2025: PYHATUNTURI

Ready for days of fun and magic in this winter wonderland? Bring out the child in you and go tobogganing, try downhill and cross country skiing, fat biking, ice carting or snowshoe walking – it's all right there for you to enjoy. In between all this activity don't forget to try some hot chocolate and for the adults, with a dash of Minttu to warm your toes!

This morning will be good opportunity to take a ride by chair lift to the top of the Pyhätunturi fell to take those jaw dropping social media pictures of the spectacular views. If you start to feel chilly, pop into the cosy Tsokka restaurant for a hot chocolate.

22nd DECEMBER 2025: PYHATUNTURI

Pyhä ski slopes are a great place to learn to ski if you've a first timer. Speeding down ski slopes may not be your thing so try something a more energetic - cross country skiing. The ski shop's well equipped with everything needed for both skiing activities and English speaking ski instructors are on hand. Slopes are also floodlit so you can ski before sunrise and after sunset. .

Situated 20 minutes from Pyhätunturi in the village of Luosto, is the worlds' northernmost Amethyst Mine.

This is a unique place, situated atop the fell (small mountain) providing more spectacular views. Even the transfer to the Mine is unusual – in a carriage behind a snow tractor.



After a presentation on the Mine, it'll time to dig for your own lucky stone. This one's another winner with the kids.

23rd DECEMBER 2025: PYHATUNTURI

Ready for the highlight of your holiday - to be transported to a world where fantasy comes to life - to an enchanted place where Santa takes a time out before he sets off on his global gift-giving journey? You'll need personal invitation only given to well behaved boys and girls both big and small. So be warned - the elves are out keeping an eye on you!

Before we meet Santa, we're do some biscuit baking. Word from the elves is that Santa does love a good Finnish Christmas pipari biscuit so we'd better make sure these are the best biscuits ever!

24th DECEMBER 2025: PYHATUNTURI

Time to meet Lapland's most famous animal - reindeers. Set off on a sedate sleigh ride through the snow laden forest absorbing the the silence and beauty of your pristine surroundings.

Dinner this evening will be a sumptuous Christmas feast with a sweeping selection of hot and cold buffet. Remember to save your appetite!

25th DECEMBER 2025: PYHATUNTURI

Optional activity: Snowmobiling. Set off on your motorcycle on skis following your guide across the lake and through snow laden forests. A thrilling and exhilarating experience. Drivers must be in possession of valid driving licence.

Dreaming of being a husky musher? They're a strong spirited bunch these huskies who pull up to five times their weight without any effort. After an introduction to the huskies and driving instructions, it's time to test your skills when you set off with a passenger in the sleigh pulled by your own husky team. Expect a speedy ride—hold on to your beanie!



View from bottom of ski slope



Our final night so dinner this evening will be in a special venue.

26th DECEMBER 2025: DEPART PYHATUNTURI

Sadly, the time has come to say goodbye to this fantasy place called Lapland.

Transfer to Rovaniemi and travel by day train to Helsinki. If you prefer to fly to take the overnight train, this can be arranged for your account.

ALL THIS INCLUDED:

- Airport transfer to Helsinki Hotel
- Overnight Helsinki hotel with breakfast
- Guided sightseeing tour of Helsinki
- Overnight train Helsinki to Rovaniemi
- Return transfer to Lapland Resort
- Six nights selected accommodation in Lapland
- Two dinners
- Christmas Dinner
- Special Venue dinner
- Husky Safari
- Reindeer Safari
- Meet Santa
- Biscuit baking for children
- Snow Fun
- Day train Rovaniemi to Helsinki

NOT INCLUDED:

- International Flights
- Travel Insurance
- Items not shown under Included



PURESCANDINAVIA



ACCOMMODATION

HOTEL

The location of Hotel Pyhatunturi, nestled on the side of the mountain, provides spectacular views of the surrounding area and, placed right beside the ski slope, makes this a perfect ski-in ski-out location if you would like to try skiing. The hotel has a restaurant, bar, drying cupboard, sauna and gym. Breakfast is included.



Rakka Room



Pore 55

KULTAKERO

Opened in December 2022, the newly built stylish annex is joined to the main hotel by a walkway. Rooms and apartments come in different sizes.

RAKKA LUXURY ROOMS

These luxurious hotel rooms provide beautiful views of the surrounding snow-covered landscapes. Double or twin beds with possibility of third person on the couch. Drying cupboard for clothing included as is access to gym in main hotel. Free WiFi. Breakfast is included at the hotel.

PORE & TAIVAS LUXURY APARTMENTS

The stylish apartments are perfect for families and small groups with two or more cosy rooms with en suite facilities in main and some other bedrooms dependant on accommodation type. With a fully equipped kitchens, drying cupboards, sauna and the pièce de résistance - a private jacuzzi on the wrap around balcony providing, this is luxury of a different category. Access to gym in main hotel building. Free WiFi.

PYHÄLINNA 33 DELUXE APARTMENTS

These compact studios are cosy and romantic but retain a feeling of space and light. The Studios are the perfect choice for couples whilst the Family Studios are perfect for families of 3 or 4. Equipped with modern kitchen, sauna and drying cupboard and access to on-site laundromat you're assured of a comfortable stay. Studio for couples has couch which converts to single bed and a fireplace. Family studios have bunk beds for children. Free WiFi.



Pyhälinna Studio



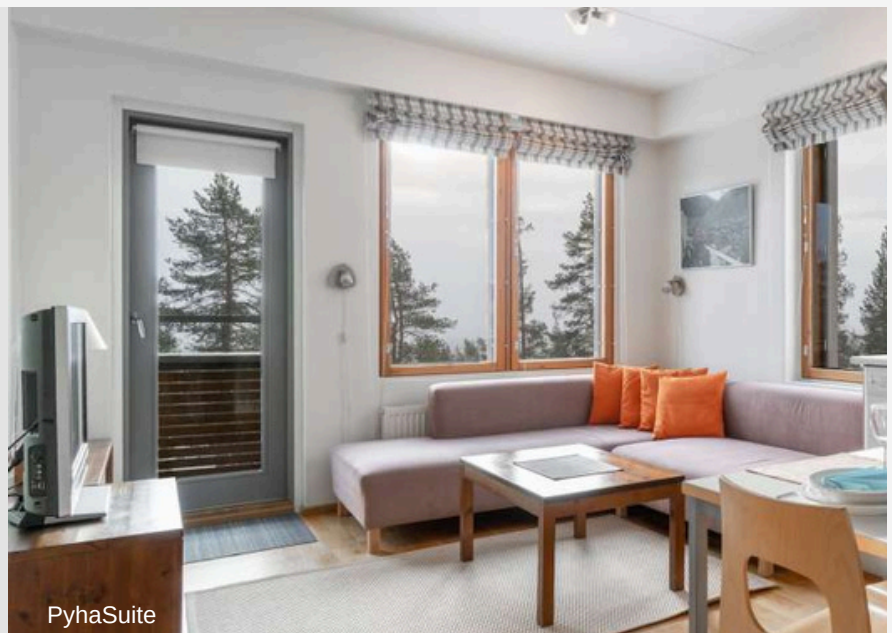
Pyhälinna 93

PYHÄLINNA 93 DELUXE APARTMENT

These deluxe spacious apartments have four bedrooms making them ideal for large families or a group of friends. The heart of the apartment is the high and light-filled dining and living room area. Beside the fireplace, the floor to ceiling windows provide lovely views of the area. Apartments have a fully equipped kitchen, sauna, washing machine and drying cupboard. Firewood and internet are included. Free WiFi.

PYHÄSUITES APARTMENTS

Set to the back of the hotel, the PyhäSuites have all you need for a comfortable stay. With two or three bedrooms – these apartments come with a fully equipped kitchen, lounge, bathroom and sauna and easy access to the on-site laundromat. Free WiFi



PyhäSuite



PURESCANDINAVIA



PURESCANDINAVIA

