

CHRISTMAS WONDERLAND EXPRESS



PURESCANDINAVIA

CHRISTMAS WONDERLAND EXPRESS

All Aboard for a Christmas Like No Other!

The magic begins where after a two day stay in Helsinki, you'll find Santa waiting on the platform of the station, waiting to say hello and wave you on your way on the first ever, Christmas Eve Santa Claus Express to Lapland. On board the train, the spirit of Christmas with festive entertainment and a delicious Christmas snack box, packed with seasonal treats to enjoy along the way.

And to add to all this excitement, you'll receive a unique Certificate as a memento of this first ever Santa Express journey to Lapland - something you'll treasure for years to come!

Your final stop is snowy Lapland, home of Santa and a place where days are filled with fun and magic comes to life. Meet Santa, travel through the Arctic wilderness in a reindeer sleigh, chase the mesmerizing Northern Lights and skim across the snow on a snowmobile. Truly a holiday creating memories of a lifetime!

Please note that this Itinerary is provisional and the order of activities may differ in the final planning.

ITINERARY

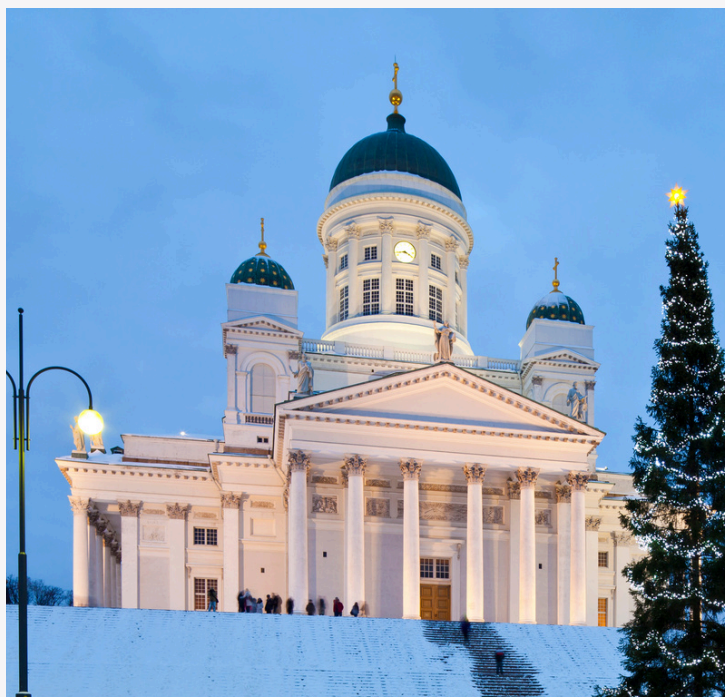
22nd DECEMBER 2025: HELSINKI

Arrive Helsinki and transfer to your hotel. The festive season is a special time to visit Helsinki - streets are illuminated with myriads of lights, store fronts are dressed with colourful Christmas displays and the air is filled with a special magic.

Depending on the Hockey League schedule, you may be able to attend an ice hockey game this evening.

23rd DECEMBER 2025: HELSINKI

Helsinki is a beautiful city - compact and easy to move around. Join a guided sightseeing tour this morning taking in the most interesting parts of Helsinki - the historical centre, the impressive library, the City Hall, Parliament buildings and unique Temppeliaukio Church (Rock Church)..



24th DECEMBER 2025: HELSINKI / OVERNIGHT TRAIN TO LAPLAND

Day at leisure.

The excitement builds as we head to the station this evening to board the **very first** journey of the Christmas Eve Santa Claus Express, bound for the snowy Lapland.

25th DECEMBER 2025: PYHATUNTURI

Arrive Kemijärvi railway station and transfer to your accommodation 45 minutes away.

It's Christmas Day, and we have a very special invitation—Santa says he's coming to meet us! Since we've traveled from so far away, he's really excited to meet us but there's one important rule—you must be on his special list! This is the list the elves keep of those who've been kind and caring throughout the year.

Inside information from the elves is that Santa loves the traditional Finnish pipari biscuits so let's decorate some of these to give him as a present.

After all this fun, it's time to enjoy a traditional Finnish Christmas meal.

26th DECEMBER 2025: PYHATUNTURI

Time to meet Lapland's most famous animal – reindeers! Set off on a cosy sedate sleigh ride through the snow-laden forest enjoying the silence and beauty of your pristine surroundings.

Today may also be a good opportunity to use your included chair lift ticket and take a ride to the top of the fell (small mountain) for spectacular views of the surrounding countryside. If you start to feel chilly, pop into the cosy Tsokka restaurant for a warm drink.

27th DECEMBER 2025: PYHATUNTURI

Ready to try husky mushing? They're a spirited bunch, these huskies, strong and eager to get going. After an introductory safety talk and driving lesson, it's time to test your skills. Driving your own team with a passenger in your sleigh head off on a speedy ride through the forest - hold on to your beanie!

If the Northern Lights are out tonight, we'll take a walk to see them in all their splendour and glory.

28th DECEMBER 2025: PYHATUNTURI

After breakfast this morning, head off to the lake for a spot of ice fishing.



Armed with a giant metal corkscrew, drill a hole in the ice, drop your line in and wait for a bite. Enjoy hot drinks and sausages around the fire.

An exhilarating experience awaits - snowmobiling! After gearing up and safety talk from your guide, set off across the frozen lake and through snowy forests. Children travel in a sleigh behind the guide. Drivers require a valid driving licence.

29th DECEMBER 2025: PYHATUNTURI

Day at leisure to enjoy optional activities - there's downhill and cross country skiing, fatbiking, snowshoe walking, visiting the Amethyst Mine, ice carting, ice floating and tobogganing.

Farewell dinner this evening.

30th DECEMBER 2025: PYHATUNTURI

Sadly, the time has come to say goodbye to this fantasy place called Lapland. But there's still time for last minute shopping and a visit to Santa Village before returning to Helsinki. Don't forget to send a postcard from Santa's Post Office to envious family and friends back home!

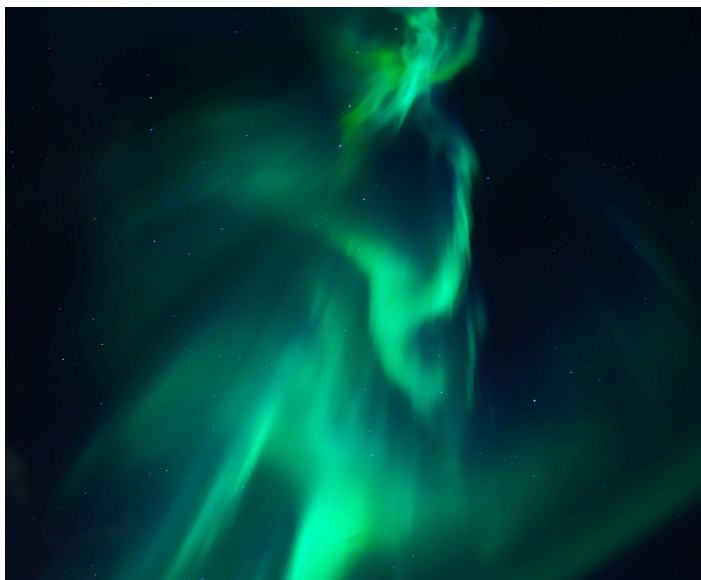
NB: Train or flight to Rovaniemi not included but can be arranged on request.

ALL THIS INCLUDED:

- Airport transfer to Helsinki Hotel
- Two nights Helsinki hotel with breakfast
- Guided sightseeing tour of Helsinki
- Overnight Santa Express Helsinki to Rovaniemi
- Return transfer to Lapland Resort
- Five nights selected accommodation in Lapland
- Outdoor suit and boots
- Two dinners
- Christmas Dinner
- Scenic chairlift ride to top of fell
- Husky Safari
- Reindeer Safari
- Ice Fishing
- Meet Santa
- Biscuit decorating for children
- Present from Santa
- Snowmobiling

NOT INCLUDED:

- International Flights
- Travel Insurance
- Items not shown under Included
- Return transport Rovaniemi to Helsinki



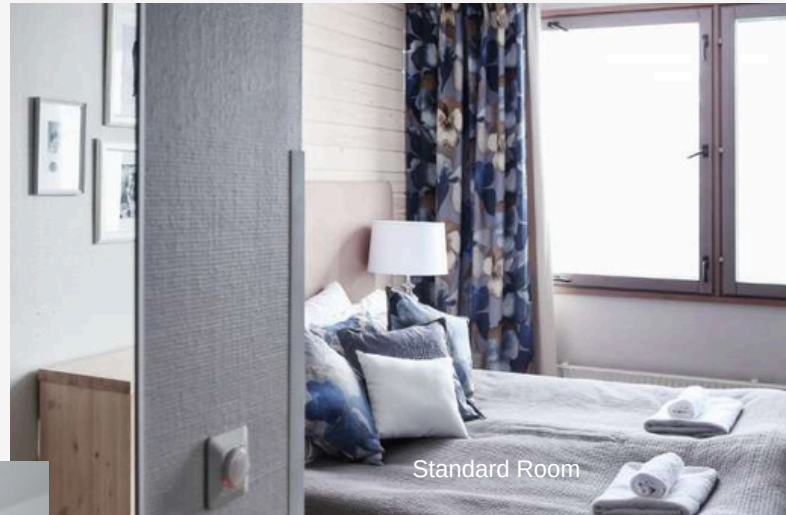
ACCOMMODATION

The location of Hotel Pyhatunturi on the side of the mountain with the village nestled at the foot of the fell, provides spectacular views of the surrounding area. Situated right beside the ski slope, the location is the perfect ski-in ski-out location if you would like to try skiing. The hotel has a restaurant, bar, sauna and gym. Breakfast is included if staying in the hotel. Situated behind the hotel in various blocks, are a number of apartments of varying standards. Breakfast is included in the hotel when staying in an apartment.

STANDARD HOTEL ROOMS

Twin room comes with 80cm wide twin beds, flat-screen TV and desk. The bathroom features a shower cabin. Most of the rooms are facing east, overlooking the fell. The hotel has a restaurant, bar, drying cupboard, sauna and gym. Breakfast is included.

The hotel has a restaurant, bar, drying cupboard, sauna and gym. Breakfast is included.



Standard Room

Superior Room

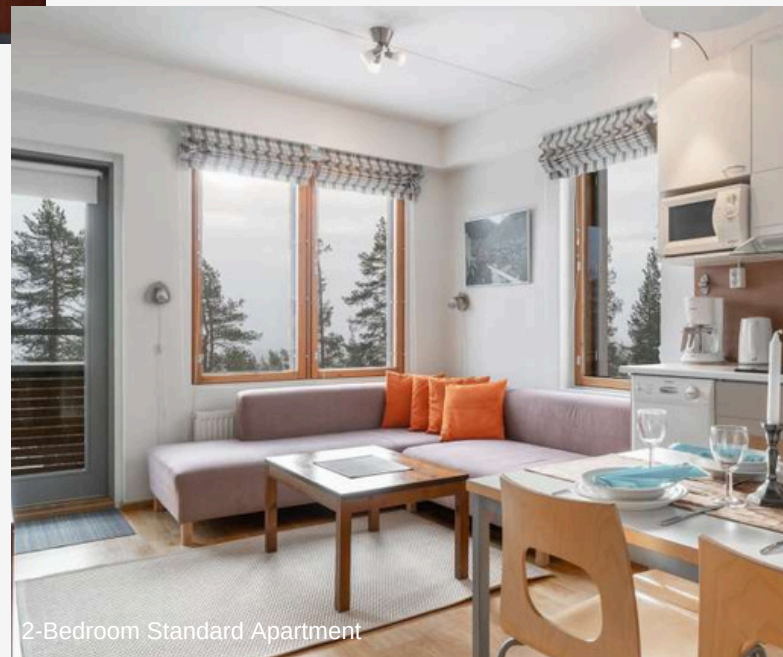


SUPERIOR ROOMS - TRIPLE SHARE ONLY

The location of Hotel Pyhatunturi, nestled on the side of the mountain with the village nestled at the foot of the fell, provides spectacular views of the surrounding area and, placed right beside the ski slope, makes this a perfect ski-in ski-out location if you would like to try skiing. The hotel has a restaurant, bar, drying cupboard, sauna and gym. Breakfast is included.

2 - BEDROOM STANDARD APARTMENTS

Set to the back of the hotel, the PyhäSuites have all you need for a home from home stay. The apartments are compact with two or three bedrooms, a fully equipped kitchen, lounge, bathroom and sauna. Access to the on-site laundromat. Free WiFi



2-Bedroom Standard Apartment

KULTAKERO ANNEX

Opened in December 2022, the newly built stylish annex has room rooms and apartments in different sizes.

RAKKA DELUXE HOTEL ROOMS

These luxurious Rakka hotel rooms provide beautiful views of the surrounding snow covered landscapes. Double or twin beds with possibility of third person on the couch. Drying cupboard for clothing included as is access to gym in main hotel. Free WiFi. Breakfast is included at the hotel.



Rakka Room



Tokka Studio

TOKKA DELUXE STUDIO APARTMENTS

This innovative Family Studio with its own sauna is more spacious than it seems. One big space has a twin bed downstairs, a sleeping loft for two persons, a well-equipped kitchen, a drying cabinet, dining area and living room.



Pore 55

DELUXE PORE 55

The stylish apartments are perfect for families with two or more cosy rooms with en suite facilities in main and some other bedrooms dependant on accommodation type. With a fully equipped kitchens, drying cupboards, sauna and the pièce de résistance - a private jacuzzi on the wrap around balcony providing, this is luxury of a different category. Free WiFi.



PyhaLinna 93

4-BEDROOM DELUXE APARTMENT

These spacious apartments have four bedrooms making them ideal for large families or a group of friends. The heart of the apartment is the high and light-filled dining and living room area. Beside the fireplace, the floor to ceiling windows provide lovely views of the area. Apartments have a fully equipped kitchen, sauna, washing machine and drying cupboard. Firewood and internet are included. Free WiFi.

CHRISTMAS WONDERLAND EXPRESS RATES 2025

STANDARD HOTEL ROOM

2 adults sharing - per person	Family Package 2 adults + 1 child under 12*	Single
\$5,999.00	\$15,200.00	\$8,220.00

DELUXE HOTEL ROOM

2 adults sharing - per person
\$6,415.00

TOKKA DELUXE APARTMENT

3 adults sharing - per person	4 adults sharing - per person	Family Package 2 adults + 1 child under 12	Family Package 2 adults + 2 children under 12
\$6,150.00	\$5,669.00	\$16,750.00	\$19,950.00

2-BEDROOM APARTMENT 43

4 adults sharing - per person	Family Package 2 adults + 2 children under 12	Family Package 2 adults + 3 children under 12
\$5,545.00	\$19,900.00	\$23,100.00

DELUXE 4-BEDROOM APARTMENT

6 adults sharing per person	7 adults sharing per person	8 adults sharing per person	Family Package 3 adults + 3 children under 12	Family Package 4 adults + 4 children under 12
\$5,990.00	\$5,895.00	\$5,635.00	\$32,190.00	\$40,780.00



PURESCANDINAVIA

T: (07) 5408 4700
 W: purescandinavia.com.au
 E: info@purescandinavia.com.au



PURESCANDINAVIA

